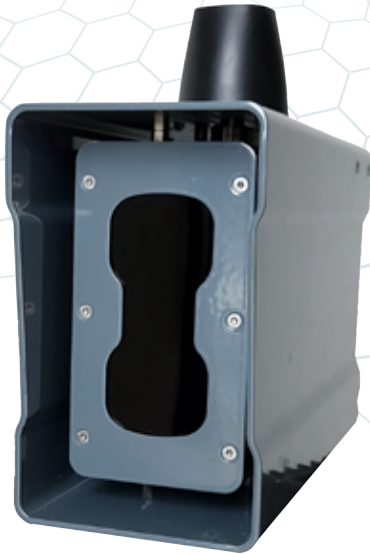


CITYPAK 5



Designed for smart city applications

- **All Integrated:** LPR is performed entirely inside the camera, [no LPR server needed](#).
- **High speed:** 20ms to digitalize plates on vehicles moving at speeds up to 155 mph (250 km/h).
- **Large coverage,** perfect for cities with low emission zones.
- **4G** modem embedded inside the camera
- **No Trigger needed:** The fastest option for [frictionless](#) applications.
- **Extremely large Recognition Distance:** From 23 to 100 ft (7 to 30 m).
- **CST Ready:** Monitoring tool for validating camera's installation and performance.

LPR that Commits!

Includes a Contractual Guarantee of Performance.

Satisfied or Refunded!

Applications



SMART CITY

LICENSE PLATE RECOGNITION

	European Plates (long)	American Plates (short)
Recognition distance	From 23 to 100 ft (7 to 30 m)	From 23 to 82 ft (7 to 25 m)
Coverage width	Up to 23 ft (7 m)	
Recognition Engine	SURVISION REALTIME EMBEDDED AI ENGINE (SREIE)	
Recognition framerate	60 fps	
Recognition direction	Both (Rear and Front)	
Recognition DGPR (Dangerous Goods Plate)	Yes	
Max vehicle speed	155 mph (250 km/h)	
Triggering	Free Running (no trigger) - Software Trigger - Hardware Trigger	
Confidence Ratio	Yes	
Recognition JPEG	Yes (4 different formats), settable quality	
Square plate formats supported	Yes	
Countries supported	All countries provided simultaneously (contact sales@survisiongroup.com for an up-to-date list)	
Other data supplied	Coordinates of the plate, Direction, Country, State, Type	
Realtime video flow	Yes	

VIDEO AND ILLUMINATION FEATURES

Lighting	8 high power LEDs IR (850 nm) or white light
CMOS	FHD 2Mpixels Black & White or Color
Compression	H264
Transport Protocol	RTSP
Available settings	Frame rate (up to 30 fps), Bitrate, Zoom

ELECTRICAL CHARACTERISTICS

Power	24 V +/- 3 V or POE++ (IEEE 802.3at)
Power Consumption	Average 19 W, max 28 W

MECHANICAL CHARACTERISTICS

Weight	5.5 lb (2.5 kg)
Dimension (LxWxH)	5.12 x 2.76 x 9 in (130 x 70 x 230 mm)
Material	Aluminium, inox
Coating	Epoxy RAL 7031
Water&Dust protection	IP67
Connectors	Amphenol RJ45 + Amphenol DB10 LTW
Operating and storage temperature	From -40 °F to +131 °F (-40 °C to +55 °C)

SECURITY, ENVIRONMENTAL AND TECHNICAL CERTIFICATIONS

Security	SSL (TLS 1.2), 802.1x, 802.1q
Photobiological Safety	IEC62471
Homologation	CISPR 32 : 2015 / AMD1 : 2019, CISPR 35 : 2016, FCC 47 CFR PART 15: 2021, ICES-003 / NMB-003 édition 7: 2020 et ICES-Gen / NMB-Gen : 2018, EN 62368-1:2014/A11 :2017, ISO 9227
MTBF	70,000 hours (minimum)
Time Synchronization	NTP Protocol

DATA OUTPUT AND INPUT

TCP/IP	SURVISION Open Camera Development Kit (CDK)
4G	LTE Cat 4 Module LTE FDD Band 1/3/5/7/8/20 LTE FDD 150Mbps DL/ 50Mbps UL
Web Interface	REST webservice and WebSocket (SSWS)
FTP	Embedded FTP Client
Ethernet	Ethernet 10 / 100 / 1000
Serial	RS485, Wiegand
IO/IN	Optocoupler. Voltage min 15V max 30V
IO/OUT	Relay Max. 220 VDC, 2A
OSDP	Yes

ACCESSORIES AND OPTIONS

Power cable	10, 33 or 98 ft (3, 10 or 30 m)
Power cable + RS485	50 ft (15 m)
Power Cable + Relay + I/O	99 ft (30 m)
Power Supply	24 V, 36 W
Fixation parts	Pole adapter and 3D adjustable brackets